

A person wearing a bright pink hoodie and a black crossbody bag stands with their back to the camera, looking out over a park. The background is filled with tall, dark green evergreen trees under a grey, overcast sky. The person is standing on a paved path with concrete curbs.

Dialogue: Systems Change to Improve Data Collection and Access

Konrad Glogowski, Pathways to Education
Jean-Marie Chapeau, Tamarack Institute

Gratitude & Acknowledgement

We begin this webinar by acknowledging that we are meeting on Indigenous land. For those of us who are settlers, we are grateful for the opportunity to meet, and we thank all the generations of Indigenous peoples who have taken care of this land.

This recognition of the contributions and historic importance of Indigenous peoples must be clearly and overtly connected to our collective commitment to make the promise and the challenge of Truth and Reconciliation real in our communities.

April 27th Webinar

April 27th Webinar we spoke to 2 CBYF Community Leads and asked them to describe:

- *How do they gather additional data for a deeper understanding of youth success?*
- *How do they measure and understand key community factors that are present and that impact youth success?*

Today's Webinar

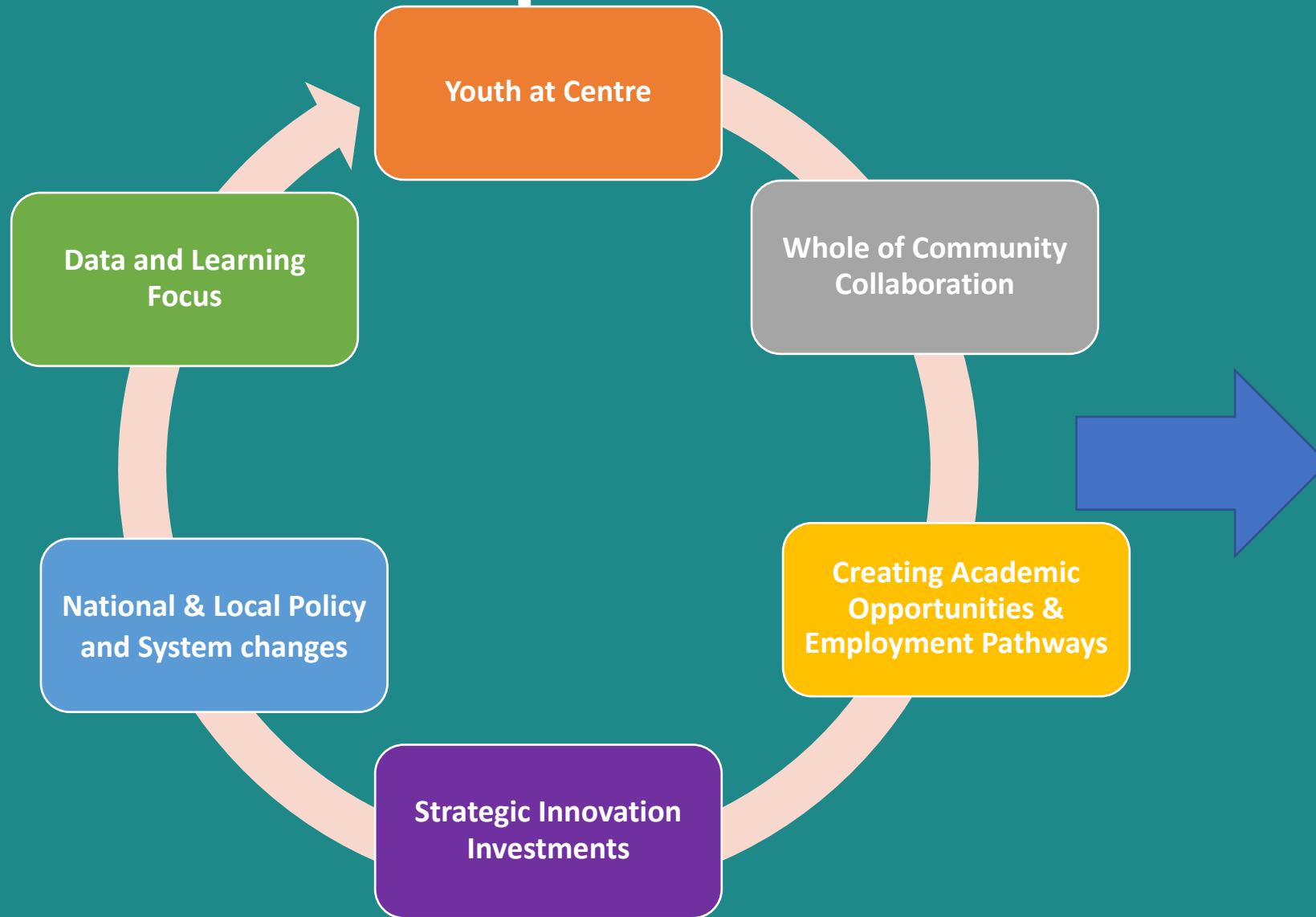
We are speaking to 2 youth-serving organizations to ask them to describe Systems Change that could Improve Data Collection and Access. This will cover examples of how to :

- *Advance metrics for youth success*
- *Improve data collection*
- *Increase data availability*
- *Define systems change related to data*

Metrics for Youth Success

- What are some areas / metrics that you are seeing that can help us understand youth success?
- How can these be measured to highlight impact?

Communities Building Youth Futures- Collective Impact Plan for Achieving Outcomes



- Improved outcomes for youth
- Improved high school & secondary graduation rates
- Increased number of youth accepted to post-secondary

Six impact areas :

Accessible Education

Service Navigation and Access to Supports

Employment and Mentorship

Identity and Social Connection

Youth Engagement and Leadership

Holistic Health and Wellbeing

Advancing metrics for youth success

Pathways to Education alumni:

"I found a writing lab on campus and started going there with all my assignments to get feedback and get help proofreading."

"I signed up for an academic advising clinic so I could really understand the program and ... graduation requirements."

"We quickly became friends, but after the first term, I knew I had to stay away from that person."

"I'm not good at studying alone, so I needed to find a way to get into study groups and go to tutorials, which was hard because I didn't know anybody."

AGENCY

RELATED WORDS & PHRASES: INDEPENDENCE, INITIATIVE, PROACTIVE, DECISION MAKING

In order to succeed in the labour market, young people need to be able to take an active role in their careers. This includes setting their own goals, making decisions, self-advocating, and proactively taking action (Boahin & Hofman, 2013; Bloom & Kitagawa, 1999; Akkermans, 2012; Williams, 2015).

RELATED EMPLOYABILITY SKILLS



METACOGNITION

RELATED WORDS & PHRASES: ACTIVE LISTENING, LIFE-LONG LEARNING, KNOWING HOW ONE LEARNS

As the labour market changes, the need to be able to adapt and learn new skills has become increasingly important. Having the skills to know how one learns and apply previous knowledge to novel situations is vital in the changing workplace (Lane & Murray, 2019; Government of Ontario, 2016).

RELATED EMPLOYABILITY SKILLS



MINDSETS

RELATED WORDS & PHRASES: ADAPTABILITY, FLEXIBILITY, OPEN-MINDEDNESS, MOTIVATION

Being able to adapt and work on a variety of tasks with changing teams is increasingly important as the workplace becomes global (Boahin & Hofman, 2014; RBC, 2018; Lamb & Doyle, 2017; Civic Action, 2018; Van Laar et al., 2017). Being open to new ideas allows workers to connect seemingly disparate ideas and stay relevant (Schleicher, 2011; Civic Action, 2018).

RELATED EMPLOYABILITY SKILLS



SELF-EFFICACY

RELATED WORDS & PHRASES: SELF-ADVOCACY, SELF-ESTEEM, INTERNAL LOCUS OF CONTROL

Being adaptable and having the confidence to learn new skills as technology evolves will enable future employees to keep pace with the labour market (RBC, 2018; Pellegrino & Hilton, 2012; van Laar et al., 2017). Proactively setting goals and self-advocating has been shown to increase employability (Boahin & Hofman, 2013; Akkermans, 2012; Cullinane & Montacute, 2017).

RELATED EMPLOYABILITY SKILLS



SELF-REGULATION

RELATED WORDS & PHRASES: GOAL SETTING, CONSCIENTIOUSNESS, SELF-MANAGEMENT

Being able to navigate the workplace using strong personal management skills in order to achieve goals is key to success in the labour market (Boahin & Hofman, 2013; Akkermans, 2012; National Research Council, 2013; Akkermans & Tims, 2017; Pellegrino & Hilton, 2012; OECD, 2015). Strong decision-making skills are crucial to better career readiness (Williams, 2015; RBC, 2018).

RELATED EMPLOYABILITY SKILLS



RESILIENCE

RELATED WORDS & PHRASES: PERSEVERANCE, DEDICATION, COPING, ADAPTABILITY

Technology requires that workers cope with changes and learn new skills in order to stay competitive (Lamb & Doyle, 2017; Government of Ontario, 2016). The current labour market will force those in the workforce to change jobs multiple times, thus requiring resilience and perseverance (Expert Panel on Youth Employment, 2016; RBC, 2018; Van Laar et al. 2017).

RELATED EMPLOYABILITY SKILLS



Improving Data Collection

- What challenges do you face in data collection?
- What are some processes and solutions to make data collection easier?

Improving data collection

- Embrace Grounded Theory
- Frontline staff as co-researchers
- Engage funders in learning
- Expand definitions of evidence
- Am I producing value for all stakeholders?

Supporting Goal-Setting Development in Adolescence

Summary of findings and recommendations from a longitudinal study of goal-setting and self-regulation by Pathways to Education Canada.



Scaffolding helps ease students into the goal-setting approach.

Determine Priorities

It is important to acknowledge that students who are focusing on personal goals know how to prioritize, even though they may not be concentrating on school responsibilities. This may indicate a need to discuss possible adjustments with students in favour of long-term benefits.

- Recognize goals that are outside of academic responsibilities. If students have new goals in these areas of their lives, help them plan and work towards them.
- Start conversations about long- vs. short-term goals and priorities to help students understand how their goals impact their future. Use their existing skills as a scaffold for academic and long-term goal-setting.



Exposure to feedback and the resulting conversations are crucial for behaviour change.

Invest Time

Dedicating one-on-one time with younger students who are new to the program helps them adjust to the goal-setting approach and assists with a better understanding of student needs, challenges, and how they approach goal-setting.

- Take the time to discuss the value of setting goals and give practical, real-life, and age-appropriate examples that resonate with youth.
- Set smaller more manageable goals so that students can experience success faster and feel a sense of accomplishment that will encourage them to set more ambitious goals.
- Consider increasing the number of brief check-ins or nudges to track student progress.



Position accomplishments as examples of competence to build confidence and offer encouragement.

Continuous Feedback

While some students may be acknowledging feedback out of politeness, ongoing conversations about goals and contexts will, over time, become absorbed as actionable advice and lead to behaviour change.

- Consider having diplomatic conversations about the difference between polite agreement and building on the feedback you provide.
- Ask students to identify tangible outcomes of the feedback you provide. Demonstrate that outcomes follow action.
- Brief check-ins can be helpful to students as reminders of the feedback they received and the need to implement it.

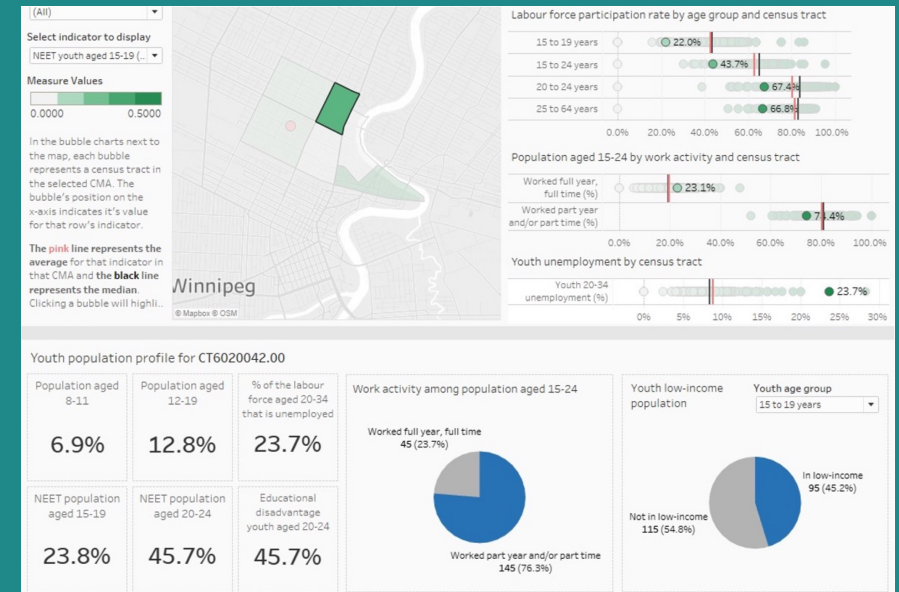
Improving Data Availability

- How can we make data collection and availability easier for communities?

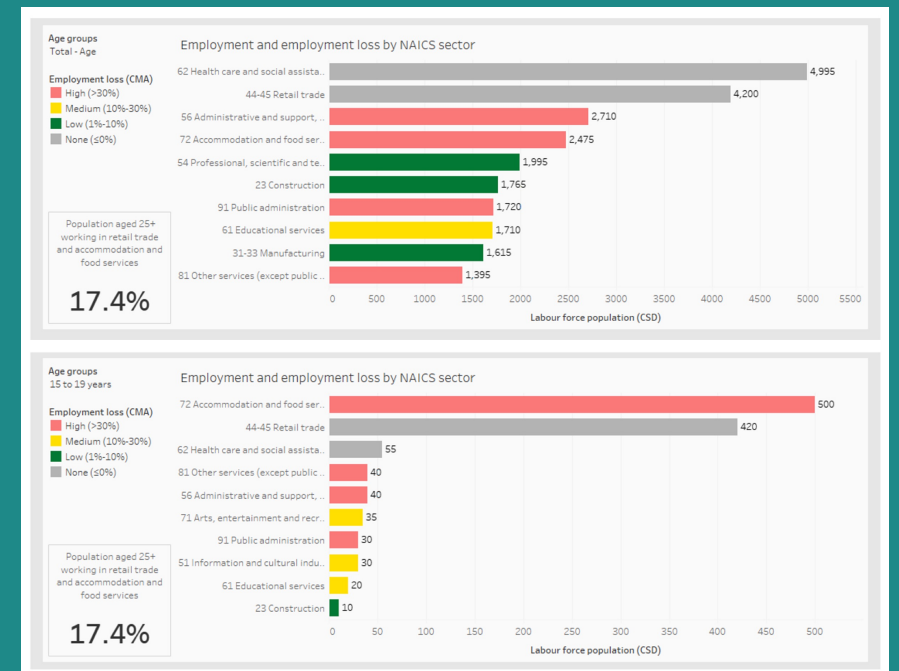
Increasing data availability

- Look for existing data and adapt
- Find allies and enhance together
- Demonstrate value and push for change

Low Socioeconomic Status and Educational Disadvantage
Winnipeg, MB



Impact of COVID-19 on Employment Loss by Industry
Saint John, NB



<https://www.pathwaystoeducation.ca/community-mapping/>

Improving data availability

GUIDE ON A PAGE CHATHAM KENT

SERVICE NAVIGATION

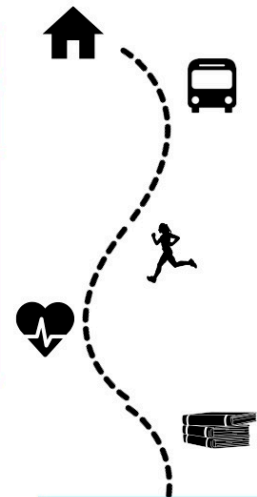
Cost per month of one bedroom living space including utilities. \$1270 City Centre \$656.67 Outskirts	\$99 Lowest Cost of High Speed Internet	Annual Cost of Transit Pass \$720 Student \$900 Regular	Lowering transit entrances? YES Designated seating? YES	Bus Service Frequency 30 MINS Peak Hours 30 MINS Non-peak hours
# of houseless youth 57	Rental Vacancy Rate 1.2%	4 # of food banks	Transit Stoppage Time: Weekend 7:15 PM LOCAL	
Houseless Centre exists but it is not specifically for youth or LGBTQ youth	57 youth using social assistance services	Financial literacy Support 3 Community Organizations 1 Banks	Transit Service Connections YES YES YES YES YES Community Parks Centres Health Clinics Recreation High Schools	

IDENTITY & SOCIAL CONNECTION

11 Library open 6 days a week	Printing services, meeting & recording rooms are available at libraries	12 Playgrounds
11 Offering online programming	No opportunities available for youth to learn traditional knowledges (Indigenous values, languages, cultures) & heritage through library programs	3 Outdoor Gyms
19 Languages accessible in biggest library		6 Skateparks
Opportunities to learn Indigenous values, languages, cultures, & heritage through: Community Centre Programs NO	Does a community centre offer youth discounted/free pass? YES	1 Dog Park
Library Programs NO	Are there community centre program subsidies? YES	7 Outdoor Courts/Fields
City Run Programs NO	Are there community centre programs catering to wheelchair users or those requiring mobility aid? YES	0 Free sports facilities & fields
Community Nonprofit Programs NO	Is it possible for young people to connect with Indigenous elders in the community? NO	9 Community Rec Centres
Locally accessible physical safe connections YES	Locally accessible safe adult connections YES	Safe adult connections for French speaking Youth NO
		Safe spaces, adult connections for LGBTQ2S+ youth NO

HOLISTIC HEALTH & WELLBEING

8 Community Health Clinics	1 Mobile Clinics for Harm Reduction	0 Supervised Injection sites
Community clinics offer mental health, emotional, sexual, physical, and social health supports/services. YES	Addiction and Substance Abuse Services YES	Is Mental health taught in high school curriculum, or service provided during class YES
Mental Health Strategy YES	Health clinics' strategy and/or understanding of LGBTQ2S+, BIPOC differences (e.g. traditional medicine), resources, and needs. YES	Is naloxone offered for free at pharmacies YES
Discounted/free Mental Health Counselling YES		
Free Menstrual Products YES	Are there community crisis centres not tied to police? NO	
Community Organizations YES	Post Secondary Institutions NO	Are post violence recovery services offered by city? YES
High Schools YES	Shelters YES	Are there local social justice services? YES
Access to free home birth kits? NO	Gynaecologist Wait Time 14 DAYS	Support services to transition from care to independent living? YES
Distance from city centre to safe abortion? OKM	Cost of Mifegymiso 0	Menstrual Products Cost \$8.49 Box of 32 tampons \$0.18 Cost of one pad \$16 Generic pregnancy Test \$32 Menstrual Cup
		Suicide Prevention line in largest post secondary YES



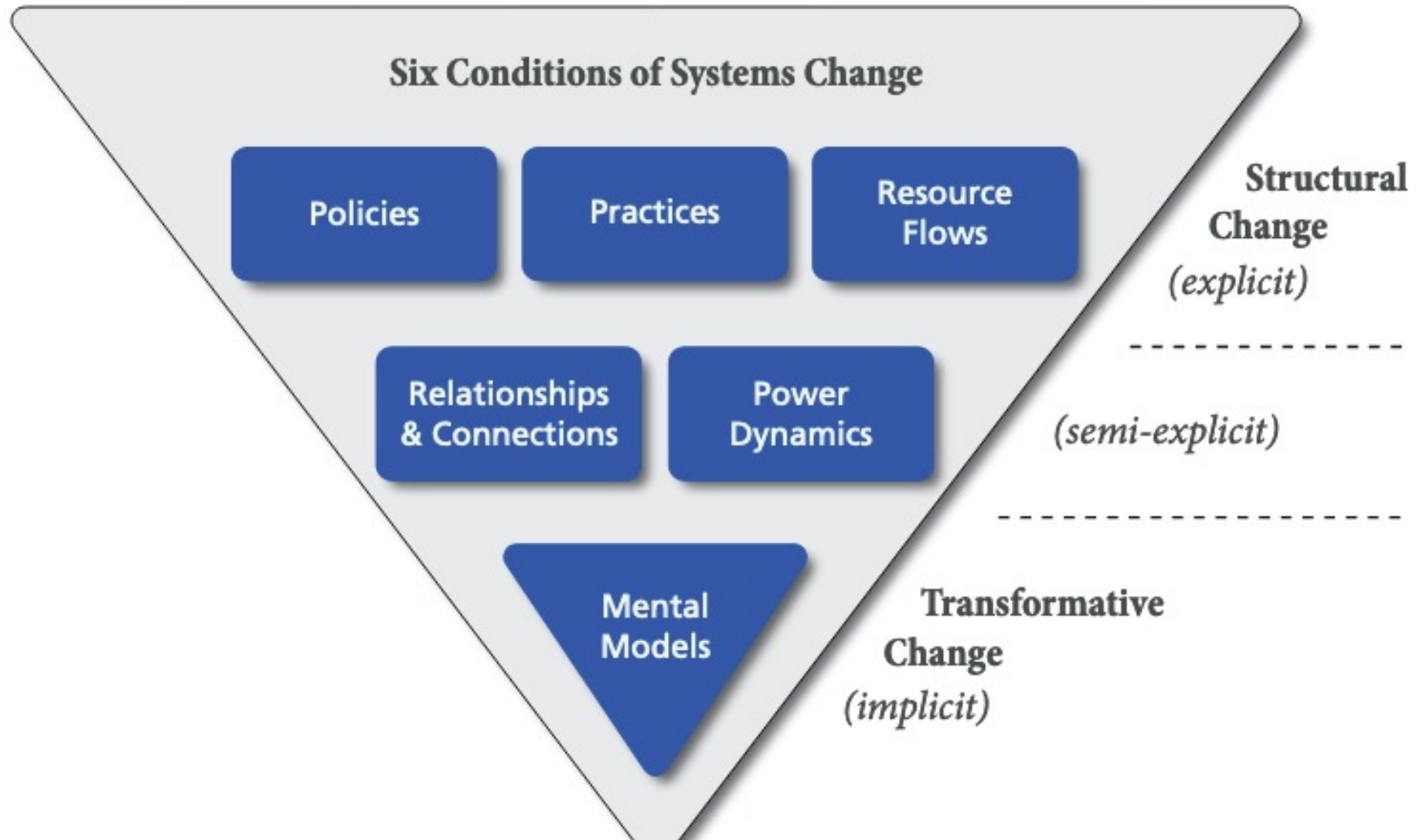
ACCESSIBLE EDUCATION

High School Graduation Rate 71.7%	High School offer dedicated career services YES	High School Food Program How many students use it 174 How many times a day can they access it 2 How many hours	Are Indigenous values, languages, cultures reflected or taught in public schools YES
Average Cost of Post Secondary Tuition (Annual) 4002 In Province \$4002 Out of Province		Do post-secondary institutions provide degrees and diplomas in indigenous languages? NO	Are there municipal Indigenous-specific scholarships? NO
		Are there municipal Indigenous-specific scholarships, what is the amount? 0	

Systems Change

- Recommendations for partners and communities
- What do we need to change at a system level and how can others engage in these discussions?

Systems Change



Questions for Speakers